

****SHORT TERM SUITE TO LET****

**Heathcoat House,
20 Savile Row,
London,
W1**

Part 5th floor – 1,423 sq ft



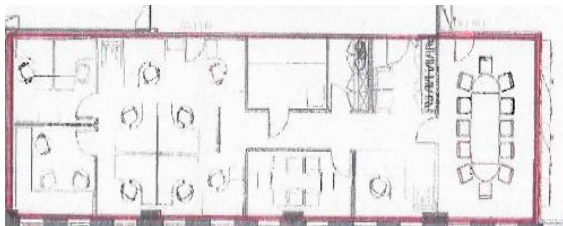
Location

The property is located on the east side of Savile Row on the corner of New Burlington Street. Green Park, Bond Street and Oxford Circus underground stations are all a short walk away.

020 7522 8500

Description

The available accommodation comprises the part 5th floor of the building, which has been fitted to a high standard and includes: two directors' offices, boardroom, meeting room and a reception.



NB Plan is not to scale

Floor Area

5th Floor

1,423 sq ft

132 sq m

Amenities

- Air cooling
- Perimeter trunking
- Double glazing
- Passenger lift
- Suspended ceiling
- Good natural light
- Staffed reception
- Kitchenette

Terms

Assignment of the existing lease for a term until 24th March 2016 at £39.60 psf and a premium of £40,000.

The floor is also available on a sublease for a term until 24th March 2016 at £55.00 psf.

Rates

£29.00 psf

Service charge

Estimated at £12.00 psf

Viewing

Strictly by appointment through the sole agents:

George Reynolds
020 7522 8524
greynolds@mellersh.co.uk

Julian Leech
020 7522 8525
jleech@mellersh.co.uk