



one

CASTLE LANE LONDON SW1

Refurbished office suite
1,435 sq ft TO LET



www.onecastlelane.co.uk



LOCATION

The building is located on the south side of Castle Lane between Palace Street and Buckingham Gate close to the Cardinal Place development and Victoria Street which provides a variety of retail and leisure outlets. Victoria mainline and underground stations and St James's Park underground station are all within a short walk (Victoria, District and Circle Lines together with Gatwick Express).

DESCRIPTION

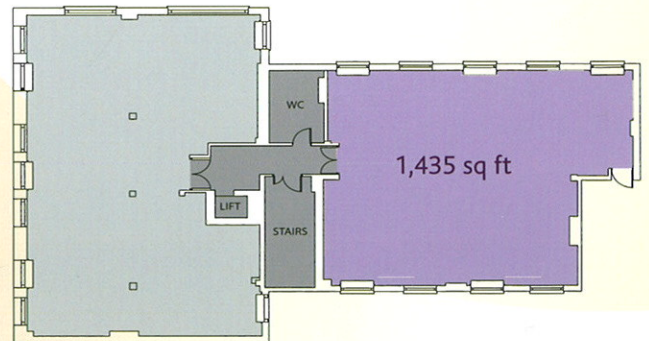
The building has been extensively refurbished and now provides bright open plan air conditioned office suites benefitting from raised accessed flooring.

ACCOMMODATION

The offices on the second floor have just been fully refurbished and have an approximate net internal floor area of 1,435 sq ft (133.2 sq m)

AMENITIES

- Air conditioning
- Full access raised floors
- LG7 compliant lighting
- Plastered ceilings
- Excellent natural light
- Refurbished entrance hall
- 24 hour access



TERMS

The offices are available on a new full repairing and insuring lease for terms by arrangement direct from the freeholder. Rent upon application.

VIEWINGS

Strictly by appointment with the agent.

Owned by



020 7522 8500
www.mellersh.co.uk

